

# PRODIGY<sup>™</sup> ELITE

## MC0630 - 600lb Cube Ice Machine

Prodigy ELITE<sup>®</sup> Modular Cube Ice Machine

### ENHANCED RELIABILITY

#### Integrated ICELINQ<sup>®</sup> App

Provides real-time diagnostics, access to settings and guided cleanings. The app also contains specific information for convenient maintenance.

#### Upgraded Sensors

Ice thickness and water sensor design enhances cleanability and amplifies durability.

#### Preservation Mode

Maximizes uptime and notifies users of potential issues.

### EASE OF USE

#### AutoAlert<sup>™</sup> Panel

The AutoAlert<sup>™</sup> panel displays relevant machine status that is visible across the room. Now featuring an external bin full indicator light and easier to read 16-segment display.

### SANITARY DESIGN

#### Removable, External Air Filters

Speeds up cleaning process and reduces unit footprint.

#### WaterSense Adaptive Purge

Optimizes water consumption, keeping the machine cleaner and operating more efficiently.



Compatible  
with ICELINQ<sup>®</sup>



The ICELINQ<sup>®</sup> app simplifies  
interaction with machine via  
Bluetooth<sup>®</sup> connection



Intelligent sensor technology  
maximizes efficiency and  
lowers operating costs



### 24 Hour Volume Production

Air Cooled		Remote		Water Cooled	
70°F/21°C 50°F/10°C	Air Water	90°F/32°C 70°F/21°C	70°F/21°C 50°F/10°C	70°F/21°C 50°F/10°C	Air Water
582/265 lb/kg		479/218 lb/kg	614/279 lb/kg	540/245 lb/kg	603/274 lb/kg
				536/244 lb/kg	



### Modular Bin Options

Model Number*	Dimensions W" x D" x H"	Bin Application Capacity lb/kg	Finish	Ship Weight lb/kg
B330P	30 x 34 x 36	344/156	Poly	130/59
B530S or P	30 x 34 x 50	536/244	Metallic or Poly	150/68
B842S	42 x 34 x 44	536/244	Metallic	190/86



Contact Scotsman for bin top requirements.



### Cube Ice

Common ice form, ideal for  
mixed drinks.



Small Cube  
7/8" x 7/8" x 3/8"  
(2.22 x 2.22 x .95 cm)



Medium Cube  
7/8" x 7/8" x 7/8"  
(2.22 x 2.22 x 2.22 cm)



### Certification



### Warranty

- 3 Years parts and labor on all components.
- 5 Years parts and labor on the evaporator.
- 5 Years parts on the compressor and condenser.
- Warranty valid in North, South & Central America for commercial installations.
- Contact factory for warranty in other regions.
- Residential Applications: 1 year parts and labor

# Scotsman<sup>®</sup>

101 Corporate Woods Parkway, Vernon Hills, IL 60061

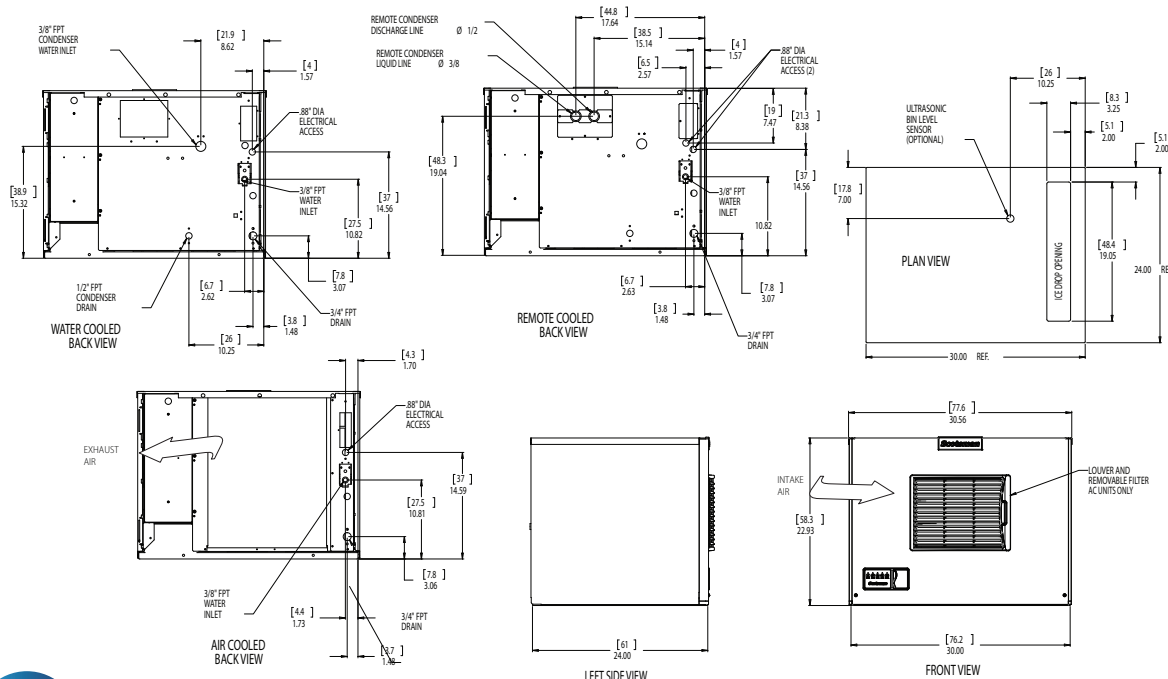
1-800-SCOTSMAN | Fax: 847-913-9844 | [www.scotsman-ice.com](http://www.scotsman-ice.com) | [customer.relations@scotsman-ice.com](mailto:customer.relations@scotsman-ice.com)

MC0630 - 600lb Cube Ice Machine



# MC0630 - 600lb Cube Ice Machine

Prodigy ELITE® Modular Cube Ice Machine



## Specifications

<div></div>										
Model Number	Condenser Unit	Basic Electrical Volts/Hz/Phase	Max. Fuse Size or HACR Circuit Breaker (amps)	Circuit Wires	Min. Circuit Ampacity	Energy Consumption kWh/100 lb (45.4 kg) 90°F(32°C)/70°F(21°C)	Water Usage Gallons/100 lb (liters/45.4 kg)			
Cube Size: medium or small										
							Potable 90°F(32°C)/70°F(21°C)	Condenser 90°F(32°C)/70°F(21°C)	Energy Star	
med.	MC0630MAX-1	Air	115/60/1	20	2	18.3	5.18	17.6/66.9	-	★
	MC0630MAX-32	Air	208-230/60/1	15	2	9.5	5.18	17.6/66.9	-	★
	MC0630MR-1	Remote	115/60/1	20	2	20.0	5.35	18.0/68.2	-	
	MC0630MR-32	Remote	208-230/60/1	15	2	10.8	5.35	18.0/68.2	-	
	MC0630MWX-32	Water	208-230/60/1	15	2	8.6	3.70	17.2/65.4	155.0/589.0	
sm.	MC0630SAX-1	Air	115/60/1	20	2	18.3	5.18	17.6/66.9	-	★
	MC0630SAX-32	Air	208-230/60/1	15	2	9.5	5.18	17.6/66.9	-	★
	MC0630SR-32	Remote	208-230/60/1	15	2	10.8	5.35	18.0/68.2	-	
	MC0630SWX-32	Water	208-230/60/1	15	2	8.6	3.70	17.2/65.4	155.0/589.0	



## All Models

### Dimensions (W x D x H):

Unit: 30" x 24" x 23"  
(76.2 x 61.0 x 58.4 cm)

Shipping Carton: 33.5" x 27.5" x 28"  
(85.1 x 69.9 x 71.1 cm)

Shipping Weight: 190 lb / 86 kg  
BTUs per hour: 12,700

Model Number	Refrigerant	Refrigerant Charge (oz)
MC0630MAX-1	R290	6.5
MC0630MAX-32	R290	6.5
MC0630MR-1	R-404A	160
MC0630MR-32	R-404A	160
MC0630MWX-32	R290	6.5
MC0630SAX-1	R290	6.5
MC0630SAX-32	R290	6.5
MC0630SR-32	R-404A	160
MC0630SWX-32	R290	6.5



## Accessories

Model Number	Description
KVS	Vari-Smart™ Ice Level Control - Precisely control ice levels using ultrasonic technology.
KBILC	Basic Ice Level Control - Thermistor technology, ideal for dispenser applications.
KSB	Smart-Board™ Advanced Control - Use additional operational data for fast diagnosis.
KSBUN	Smart-Board™ Advanced Control with Network - Network capable.
ERC111-1	Remote condenser for MC0630MR-1 - Consult remote condenser spec sheet for details.
ERC311-32	Remote condenser for MC0630MR-32, MC0630SR-32 - Consult remote condenser spec sheet for details.
BRTE10	10ft (3.0 m) line set, brazing required
BRTE25	25ft (7.6 m) line set, brazing required
BRTE40	40ft (12.2 m) line set, brazing required
KPAS	Prodigy Advanced Sustainability Kit - Includes KVS and KSB - N
XR-30	XSafe® Sanitation System for Modular Cube - Continuous operation, field-installed.

Scotsman recommends all ice machines have water filtration. See Scotsman water filter specification sheet for details.



## Operating Requirements

	Minimum	Maximum
Air Temperatures	50°F (10°C)	100°F (38°C)
Water Temperatures	40°F (4.4°C)	100°F (38°C)
Remote Cond. Temps	-20°F (-29°C)	120°F (49°C)
Potable Water Pressure	20 PSIG (1.4 bar)	80 PSIG (5.5 bar)
Cond. Water Pressure	20 PSIG (1.4 bar)	230 PSIG (16.1 bar)
Electrical Voltage	-5%	+10%

Specifications and design are subject to change without notice.